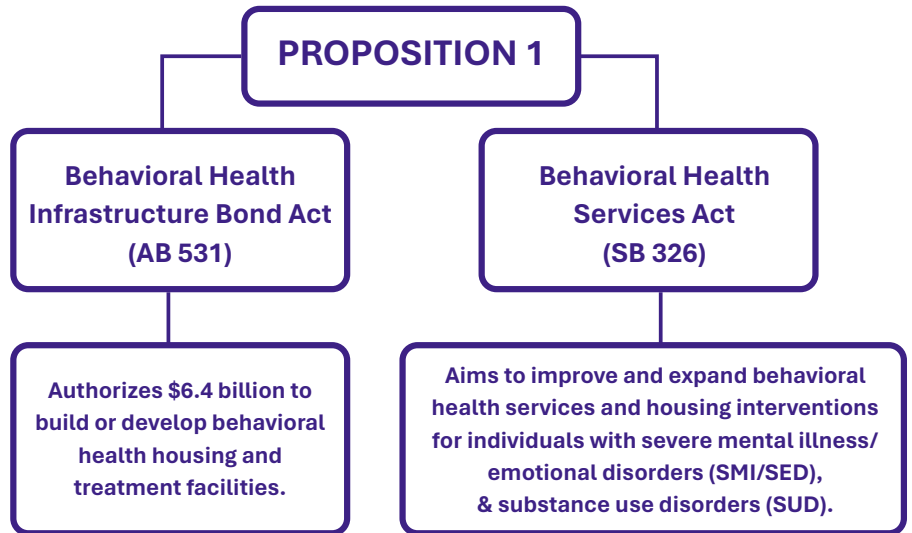


# Behavioral Health Services Act (BHSA)

## Frequently Asked Questions (FAQs)

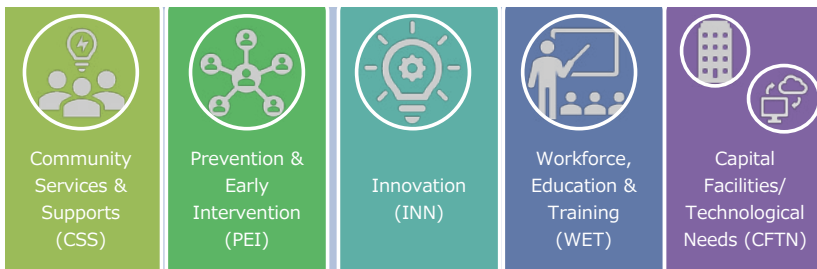
### Proposition 1: High-Level Summary

- Philosophical shift from prevention, intervention, and treatment across the mental health spectrum to focus on the most severely mentally ill individuals.
- Inclusion of eligible programming for those with substance use conditions.
- Services and supports primarily focused on housing.

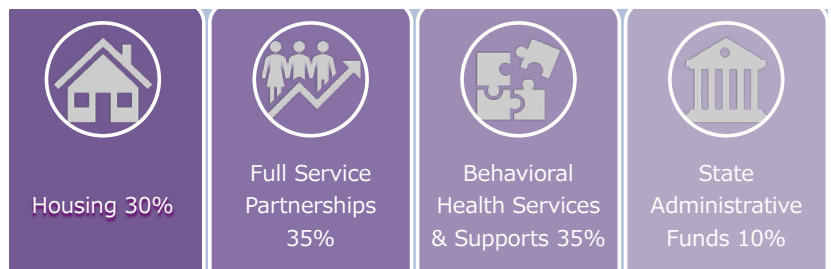


### Proposition 1: System Change

#### Mental Health Services Act



#### Behavioral Health Services Act



Click [HERE](#) to read SB326 legislation

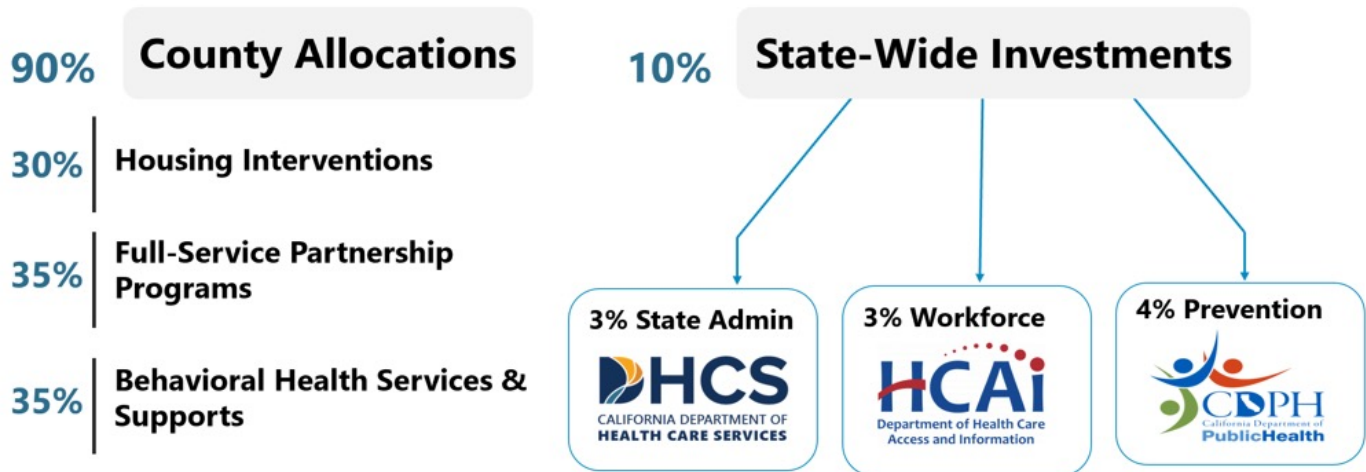
# Behavioral Health Services Act (BHSA)

## Frequently Asked Questions (FAQs)

### Proposition 1: System Change

### BHSA Funding Breakdown

Total BHSA revenue is distributed between county and state-wide allocations.



### Behavioral Health Services & Supports (BHSS) – 35%

**A majority (51%) of BHSS** shall fund an early intervention program that is designed to prevent mental illnesses and substance use disorders from becoming severe and disabling and to reduce disparities in behavioral health.\*\*

- A majority (51%) of these Early Intervention services and supports must be for people 25 years and younger.

An early intervention program shall include the following components:

- Outreach, Access and linkage, Treatment services for the purpose of preventing mental health illnesses and substance use disorders from becoming severe, may address early psychosis, and additional components developed by the Department of Health Care Services.

The State Department of Health Care Services *may require* a county to implement specific evidence-based and community-defined evidence practices.

\*\*See SB326 SEC 50. Section 5840

### NEW Resources

Transitions website: [Behavioral Health Transformation \(ca.gov\)](https://www.behavioralhealthtransformation.ca.gov/)

New State website: [Mental Health for All: https://mentalhealth.ca.gov/](https://mentalhealth.ca.gov/)

Alameda County Behavioral Health Department MHSa website: <https://acmhsa.org/bhsa/>

Click [HERE](#) to read SB326 legislation